

**Assignment – Implementing Group Policy Objects - GPOs**

Nickolaus S. Grant

University of Advancing Technology

NTW:216 – Foundation of System Administration

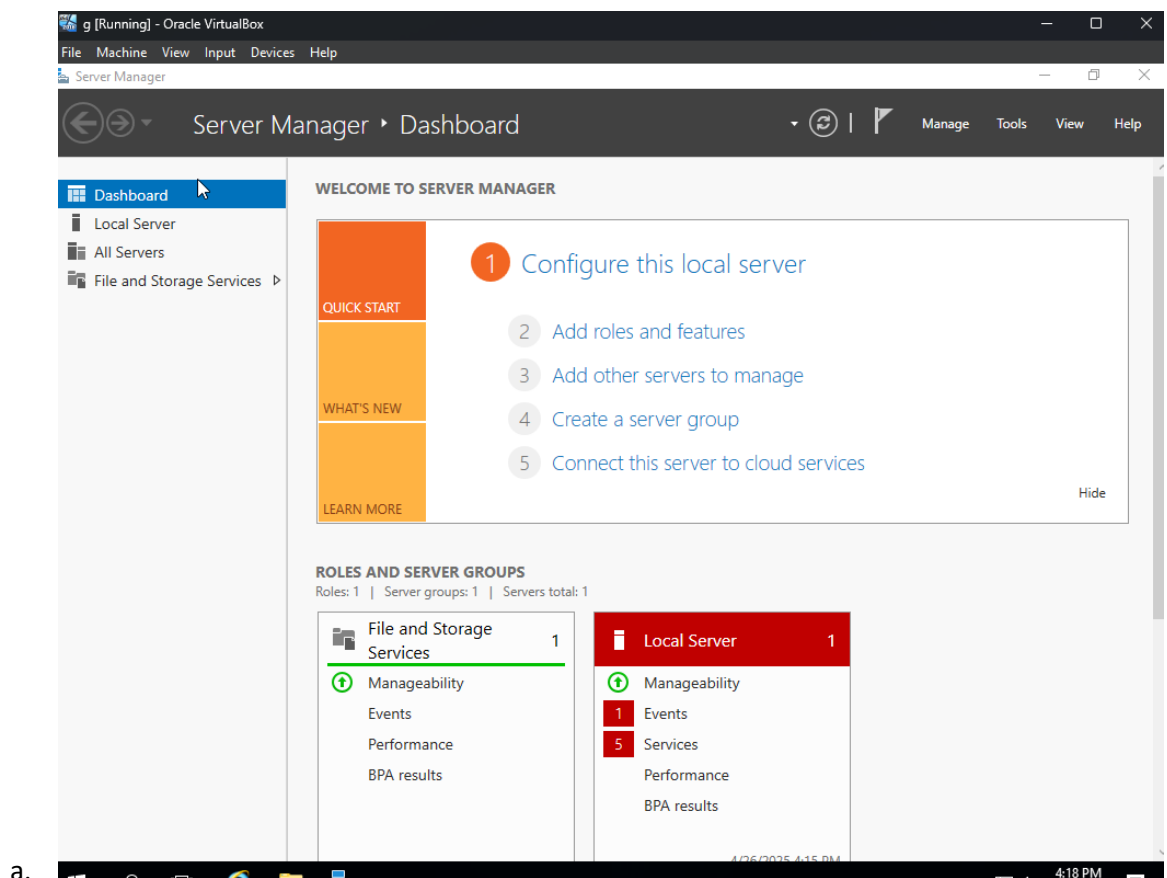
Dan Wilkins

April 17, 2022

## Assignment – Implementing Group Policy Objects - GPOs

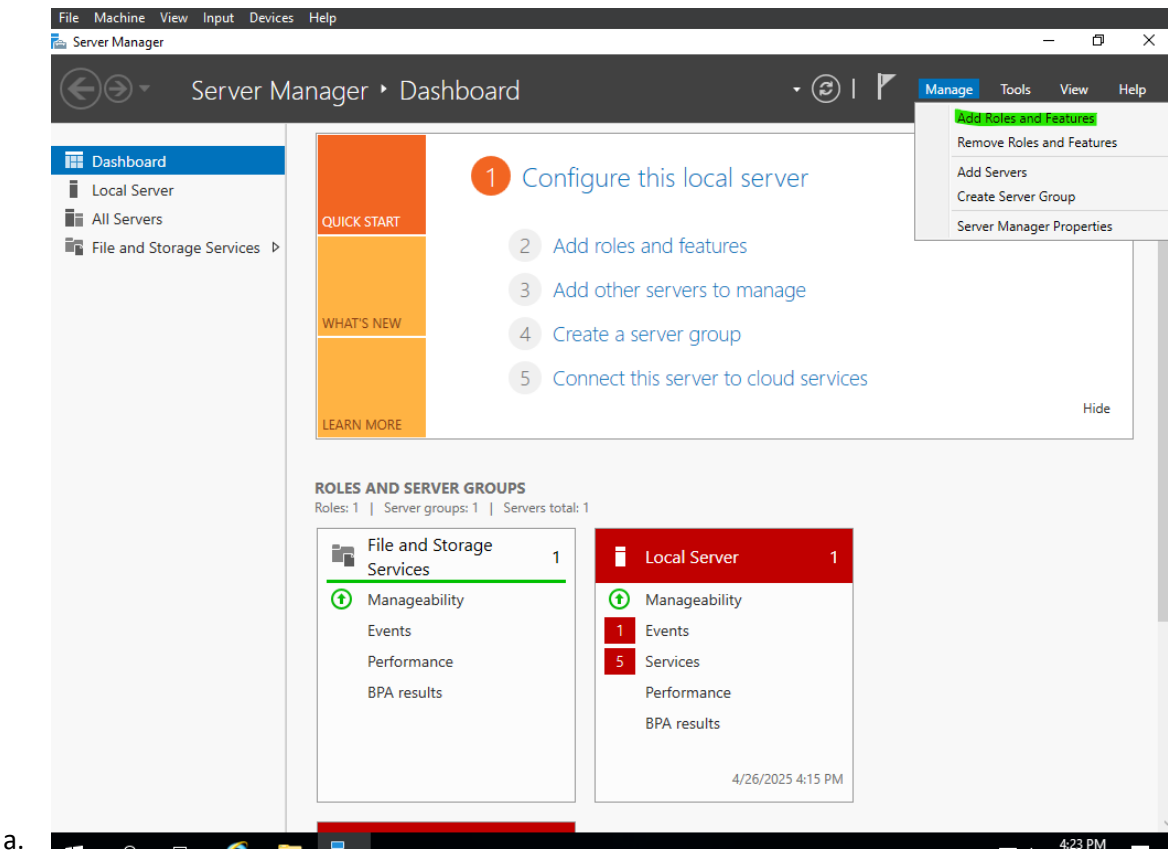
In this assignment we are to implement Group Policy Objects (GPO), in our environment. The plan with this assignment is to show you how to attach GPOs as they allow administrators to centrally manage user and computer settings across a domain environment. I will walk you through the process of creating, linking, and managing GPOs using Windows Server Manager 2016, let's get started.

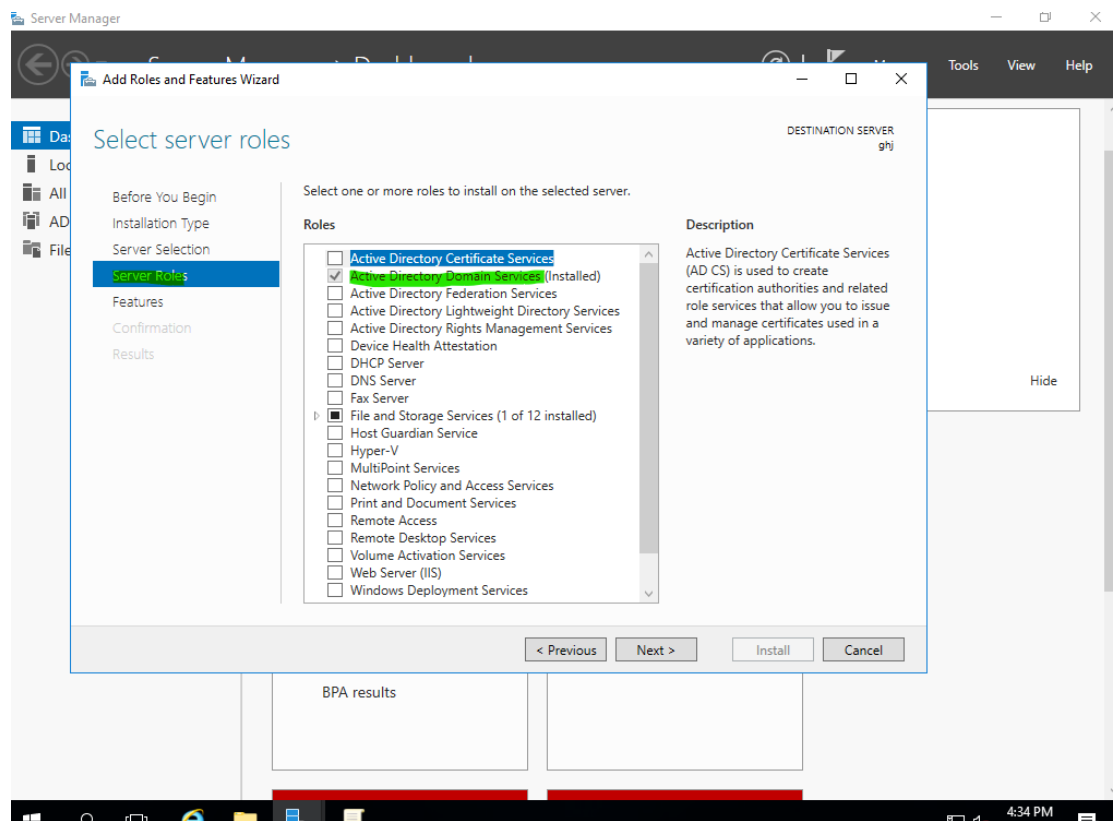
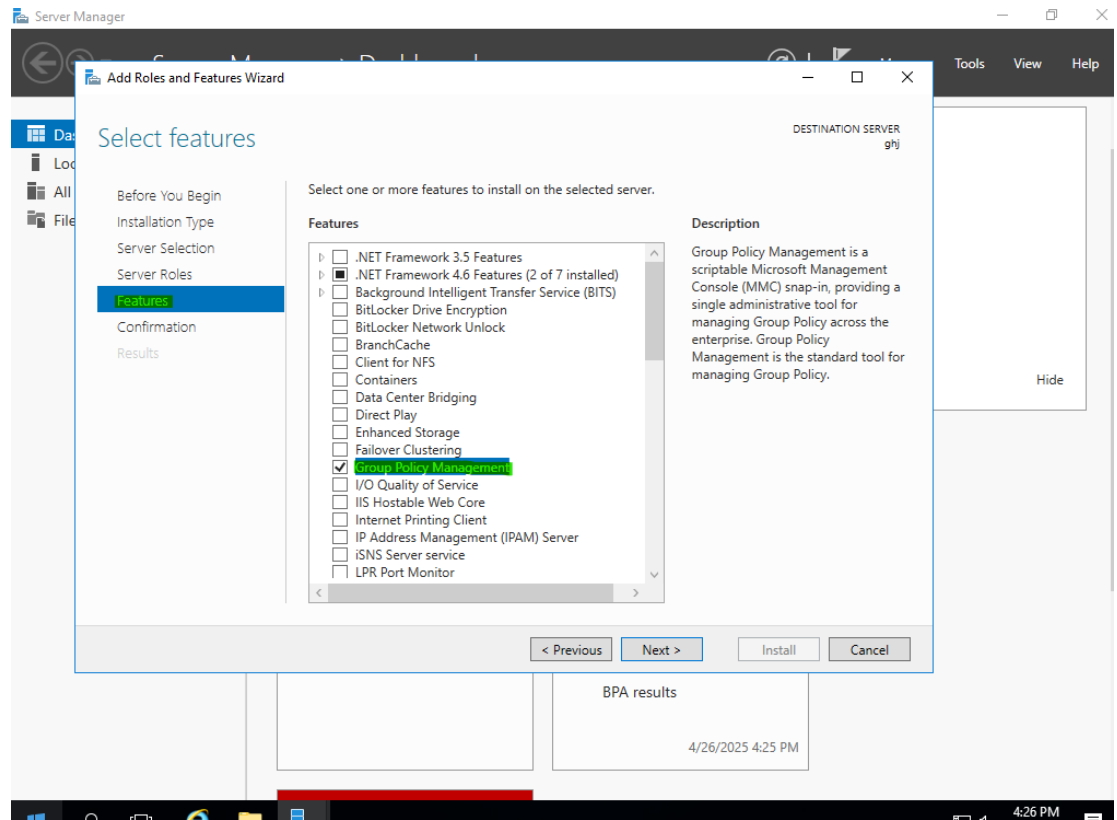
1. Open Server Manager – This is normally open when you log in, if it does not you can easily search for it by pressing the windows key. I will include a screen shot of what the Server Manager should look like when you open it.



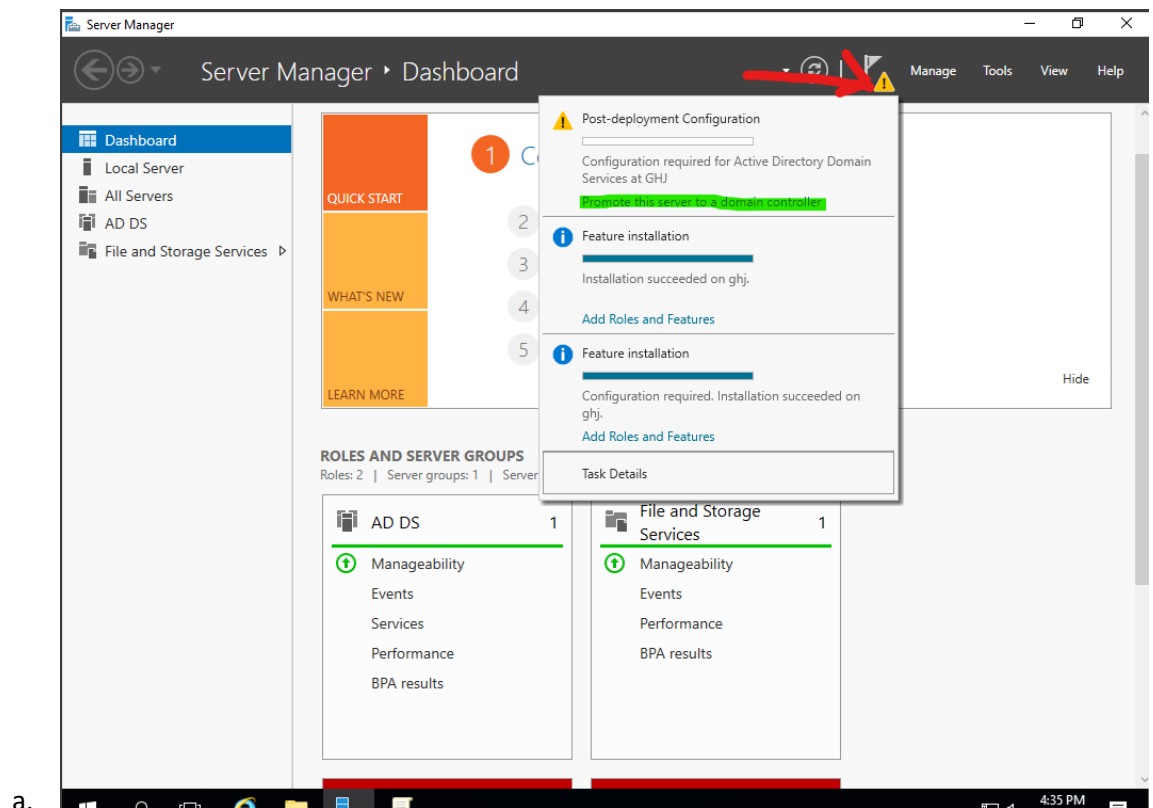
2. Open Group Policy Management – In the upper right corner you should see “Tools”, if you pressed that you should find “Group Policy Management”. If you do not see it no worries, you do not have it installed (It normally does not come in a fresh installation of Server Manager). To add it click on “Manage”, we are going to pressed “Add Roles and

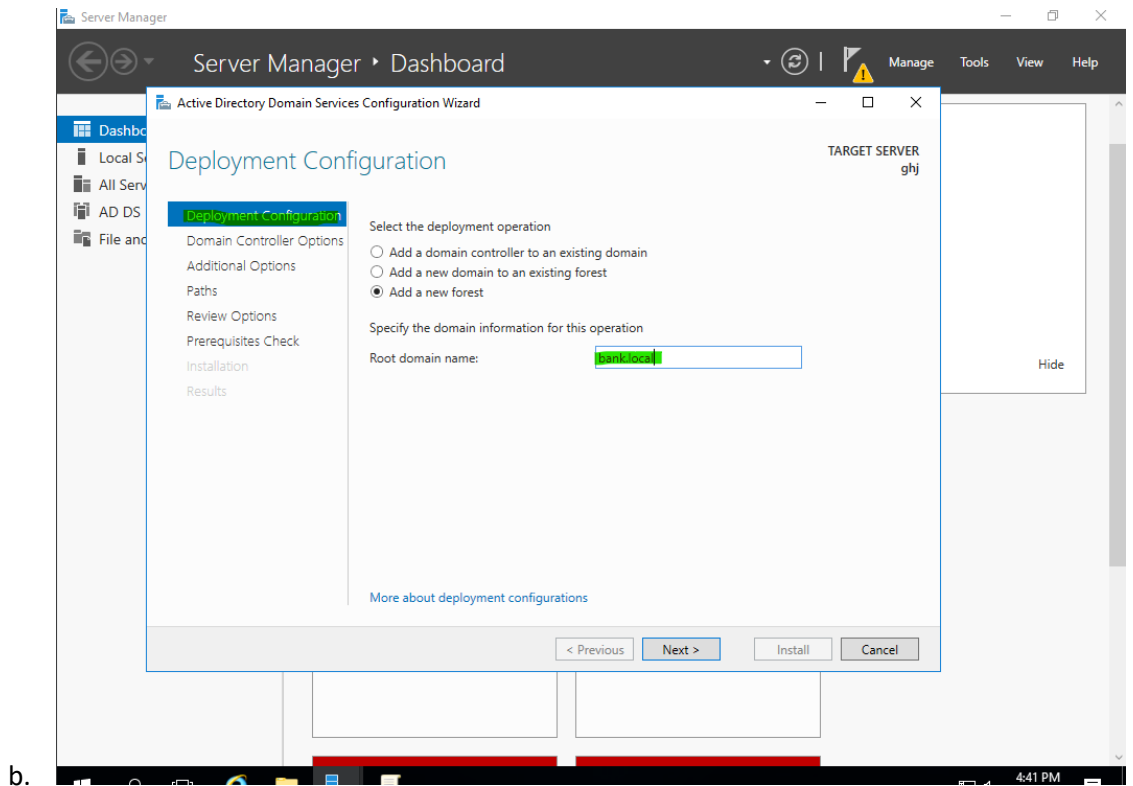
Features”. A new window will pop up, click next until you reach “Features”, there you will find Group Policy Management and click the box to check mark it. Also be sure that Active Directory Domain Services is installed as well in the Server Roles. See the images below to visual.



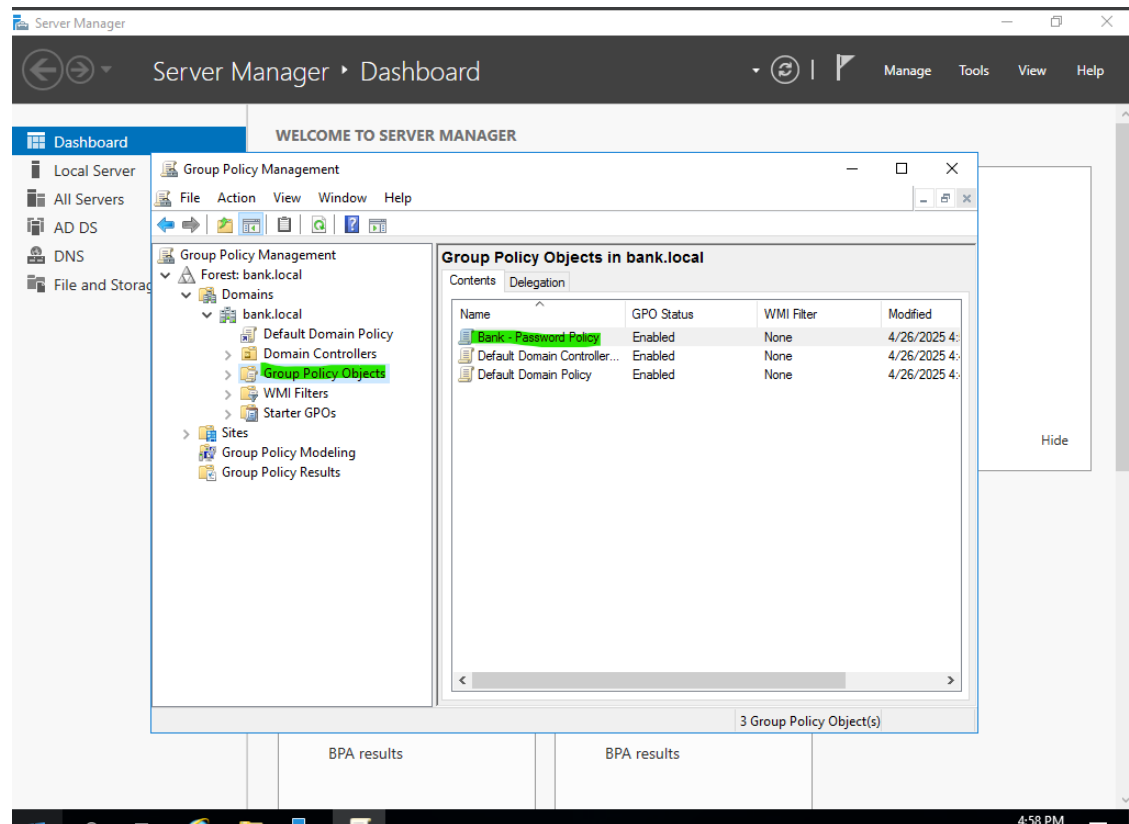


3. Active Directory Setup (OSkip if already set up) – Now that we have those installed we now need to setup our Active Directory to have a domain so we can apply GPO to OU.
- Next to the “Manage” you should see yellow indicator symbol. When you click on it, you should see something called “Promote this server to a domain controller”. Click on that and a new window will pop up that going through upgrade process. In the first section, select the “Adds a new forest” and then name your domain, I made mine called bank.local. After that click next as everything is default you also remember the password. You know everything is working when your computer reset and see AD DS in server and role groups. See images for visual.



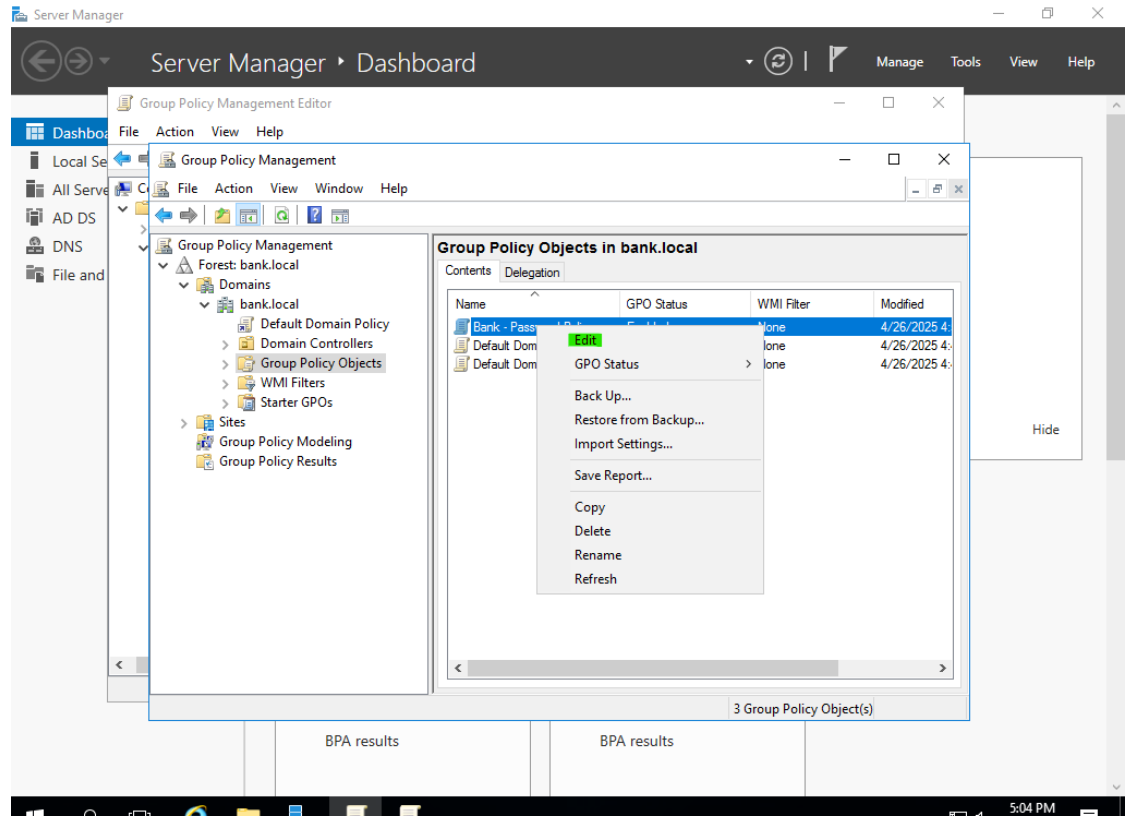


4. Creating a GPO – Now that you have restarted your Server Manager, we can now go to Tools and open Group Policy management. You should see your new domain that we made in the setup guide for Active Directory, if you already have that setup pick the Forest you wish to add a new GPO. Then click on the Domain folder, after that click on your domain. You should be able to see Group Policy Objects, now I want you to right click on it and click on New. You are now created your GPO. I named my Bank – Password Policy. When you click done you should see the policy made. See the image below for a visual.

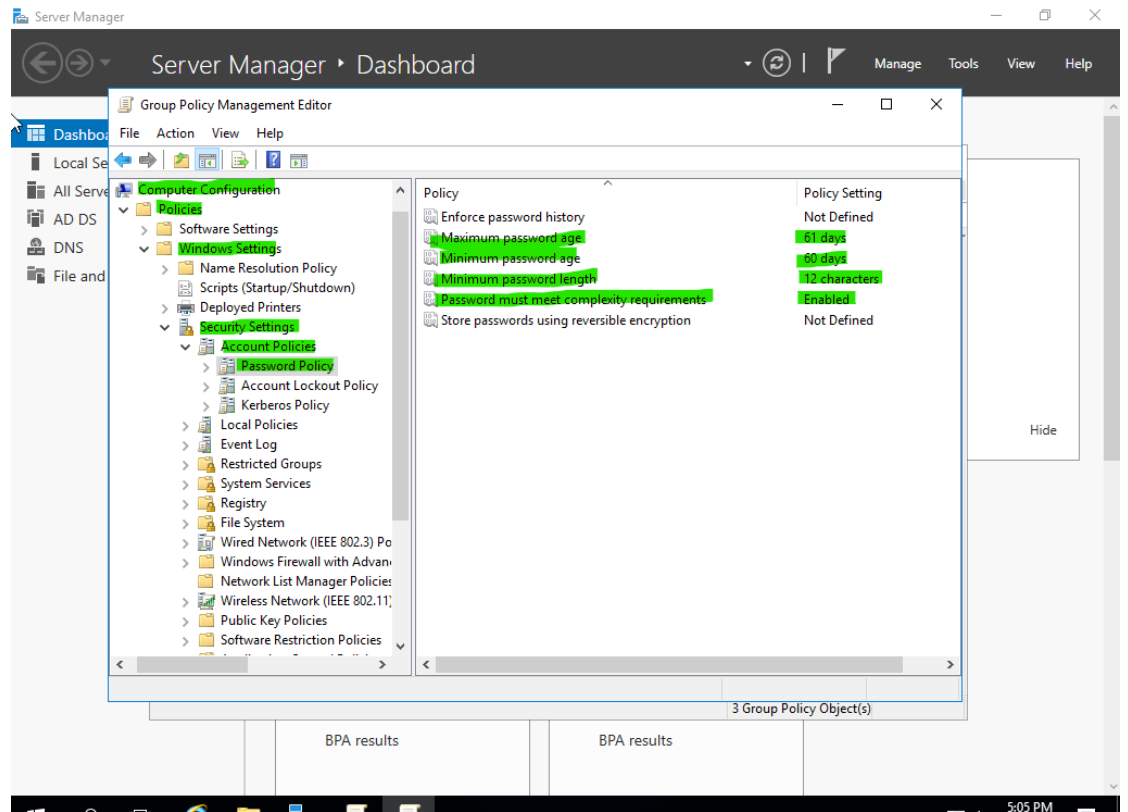


a.

5. Creating a GPO Part 2 – Now that you made the policy, lets actually apply some polices to it. If right click on the policy you just created and press edit, we can start to look for some polices to apply to this GPO. Since I am making password policy you can follow me but take some time a look through these policies that you can apply to you domain as these will be applied to your users or OU. You are going to press on computer configurations, then policies, windows settings, security settings, account policies, and password policy. Now that you there you should see on the right where you see policy you can edit, start editing, for whatever you want. I did password needs to change every 60 days, minimum character limit is 12 characters and the password needs to be complex. With that we have finally creating a GPOs. To apply this GPO you would go to your OU and link existing GPO to the user. See the image below for a visual.

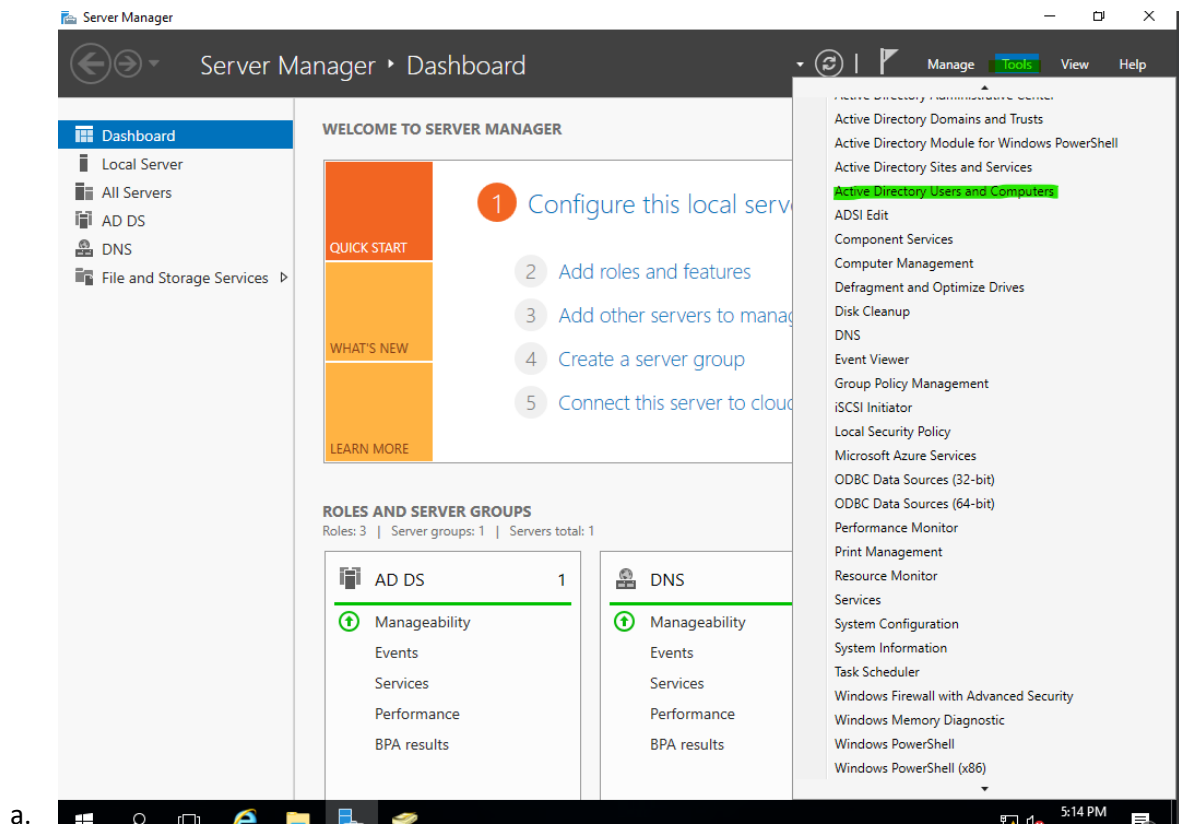


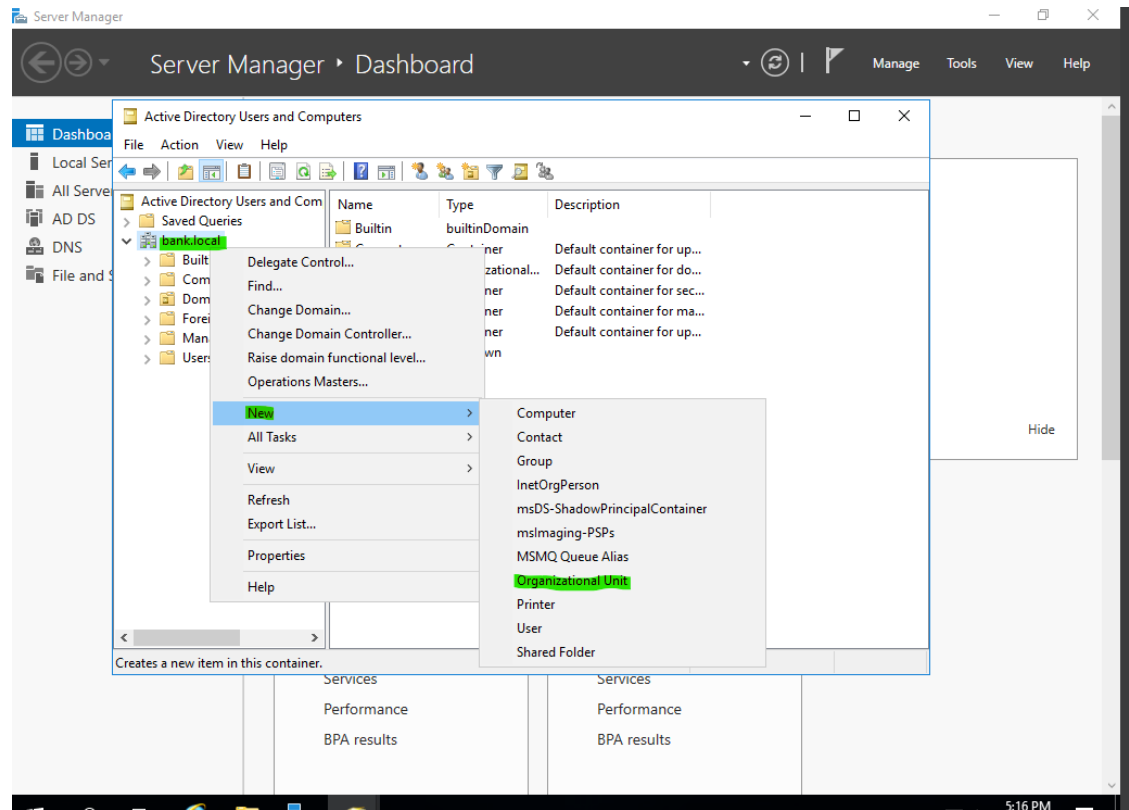
a.



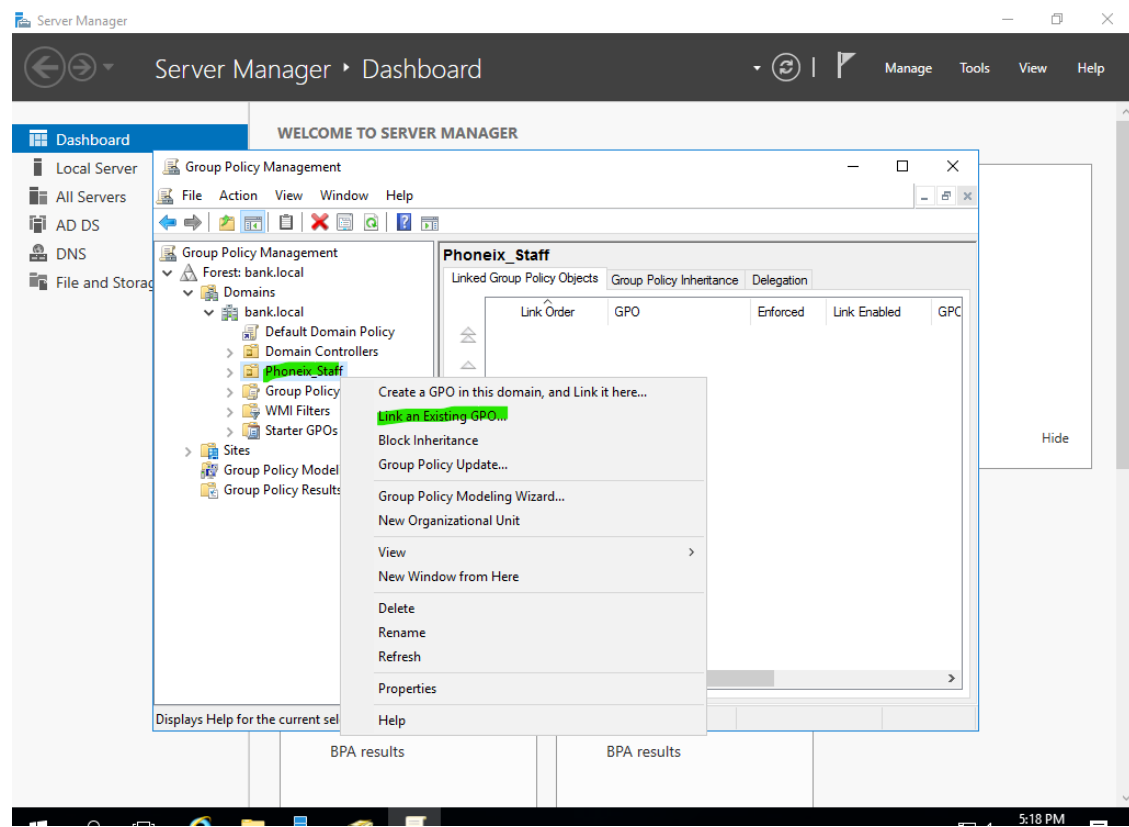
b.

6. Creating an OU – This is show you why and how we would apply a GPO and if you do not know how to create a OU, go to Tools, and click on Active Directory Users and Computers. A new window should pop up, right click on your domain and click on New and press on the Organizational Unit. Give this a name, I named mine Phoniex\_Staff, think of OU as the name of a folder for employees and computers. Now that we have created our OU. Lets attached our GPO to that OU, so go back to Group Policy Management, can find your new OU it is a folder. After you find it right click on it and press Link and Existing GPO. After that click on your new GPO and your done now all employees in that will have the password GPO policy attached. Congrats see the images below for a visual.

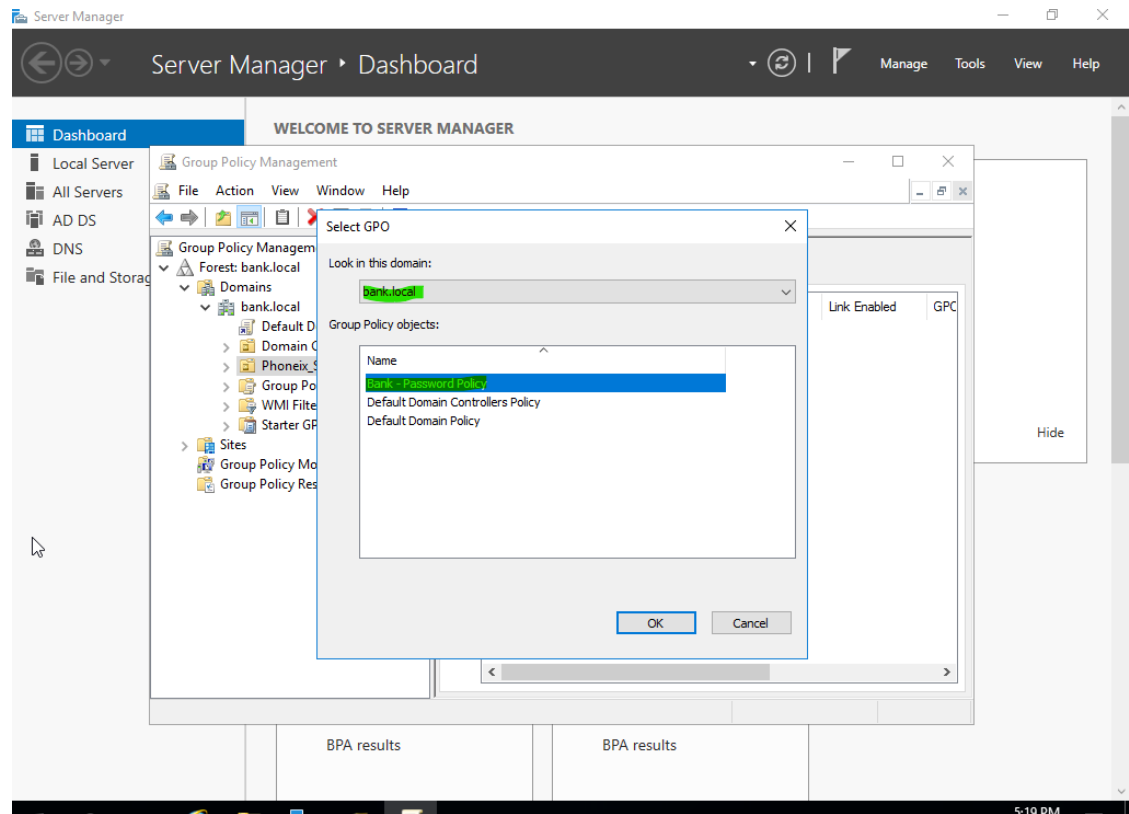




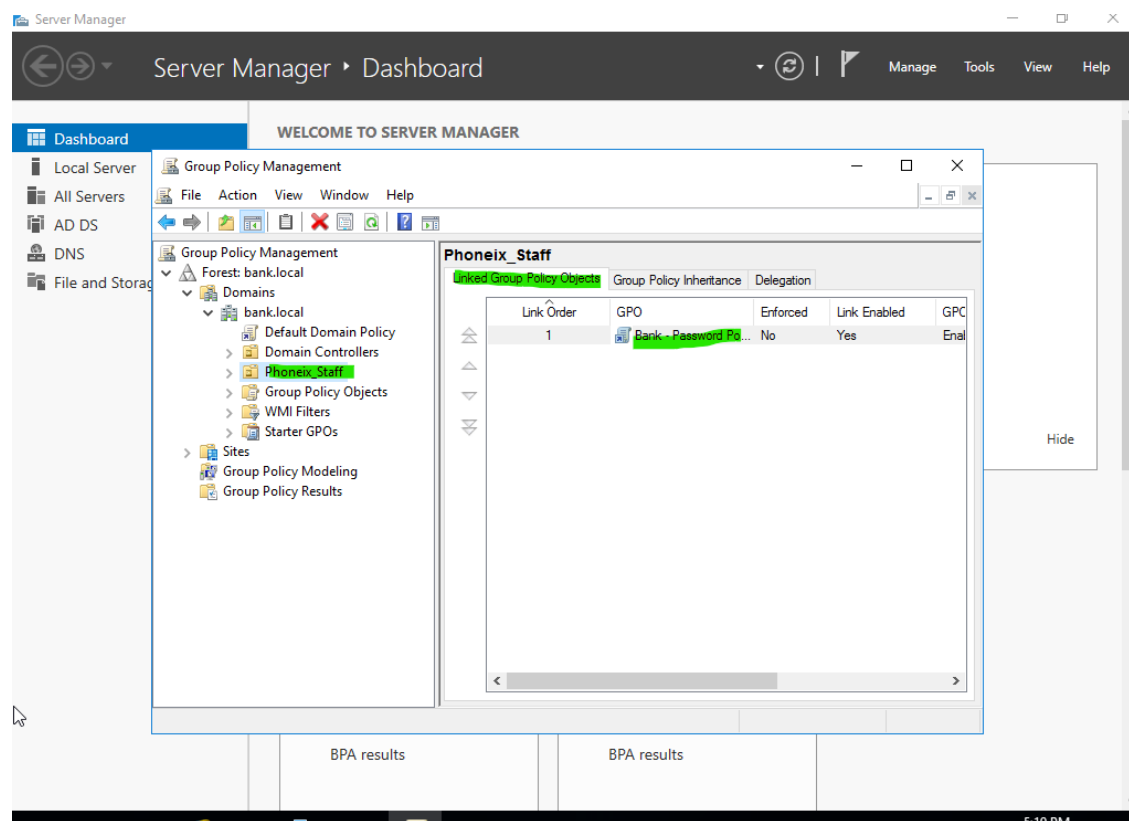
b.



c.



d.



e.



## References

D. (2021, October 29). *Create a Group Policy Object (Windows) - Windows security*. Microsoft Docs.

Retrieved April 17, 2022, from [https://docs.microsoft.com/en-us/windows/security/threat-protection/windows-firewall/create-a-group-policy-](https://docs.microsoft.com/en-us/windows/security/threat-protection/windows-firewall/create-a-group-policy-object#:~:text=Create%20a%20Group%20Policy%20Object%201%20Open%20the,to%20%28none%29%2C%20and%20then%20click%20OK.%20See%20More.)

[object#:~:text=Create%20a%20Group%20Policy%20Object%201%20Open%20the,to%20%28none%29%2C%20and%20then%20click%20OK.%20See%20More.](https://docs.microsoft.com/en-us/windows/security/threat-protection/windows-firewall/create-a-group-policy-object#:~:text=Create%20a%20Group%20Policy%20Object%201%20Open%20the,to%20%28none%29%2C%20and%20then%20click%20OK.%20See%20More.)

*For additional information on APA Style formatting, please consult the [APA Style Manual, 7th Edition](#).*